

KNOW ABOUT CORONA VIRUS 2019

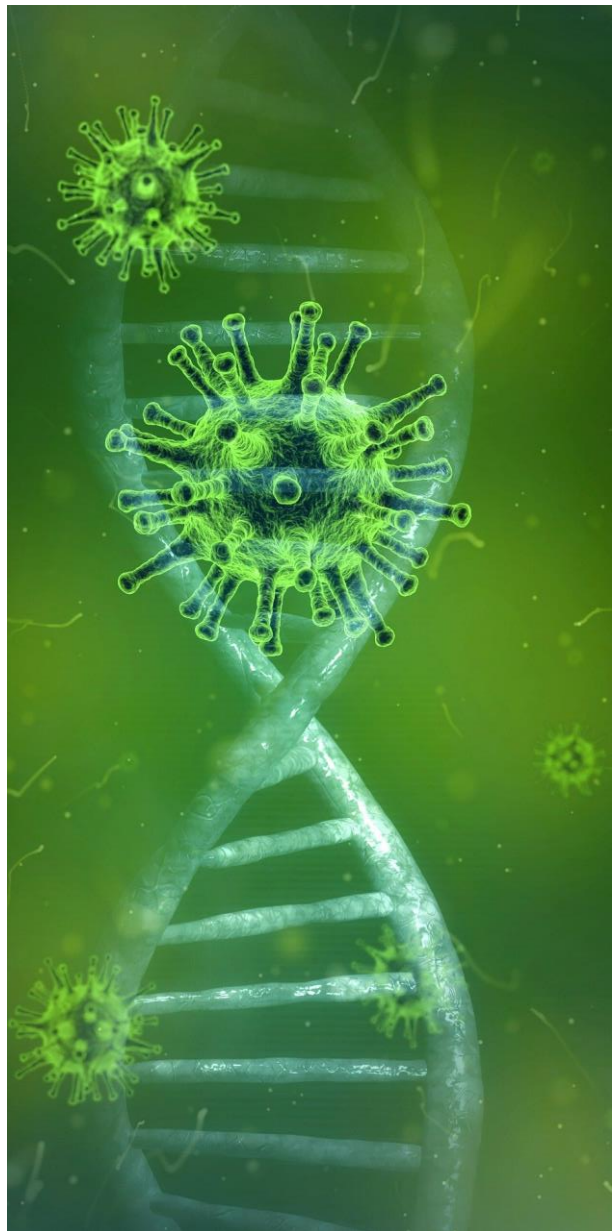
This Virus was identified in December 2019 at Wuhan city, Hubei Province of China.

We are not clear about the modes of transmissions of this covid 19. Through media infer that Virus is transmitted to human being through droplet infection. Then the infection spread from one person to other person. It is associated with fever and respiratory symptoms (coughing, shortness of breath and Pneumonia).

Close physical contact with the infected person within 14 days of infection can affect other person. To avoid this, the Government of India has taken a precautionary action of isolation. Physical separation, hand hygiene, environmental cleaning, Sanitization programme, managing laundry, food service, utensils and waste disposal are some of the precautionary measures suggested by the Government through medical officers.

How can we identify the person with COVID-19 risk factor?

- Had history of travel abroad or to the identified high risk area.
- Had close contact with the person infected within 14 days.
- Working in or attended health care facility when patients with confirmed COVID-19 were admitted.



- Clinical details of the patient with the following signs and symptoms to be identified:
 - (1) Fever
 - (2) Cough
 - (3) Shortness of breath
 - (4) Sore throat (or) running nose
 - (5) Nausea, Vomiting, Diarrhoea.
 - (6) Chronic Renal failure, Heart disease, Pneumonia, Hypertension.
 - (7) Chronic ailments like Cancer.

Rev.Dr.V.Gilburt Camillus, S.J.

Students Counsellor

ST. Joseph's College, Trichy.